

让中国装备技术与世界同步  
WE WALK ALONGSIDE THE WORLD

股票代码:300415

**YIZUMI**伊之密

# YiCMS

## 伊点通注塑机状态监控系统

Yi CMS Condition Monitor System

App下载



PC端体验-网址: <https://iiot.yizumi.com>

广东伊之密精密机械股份有限公司  
GUANGDONG YIZUMI PRECISION MACHINERY CO., LTD.

地址:广东省佛山市顺德高新区(容桂)科苑三路22号 TEL:86-757-2926 5301 FAX:86-757-2926 5300 [www.yizumi.com](http://www.yizumi.com)

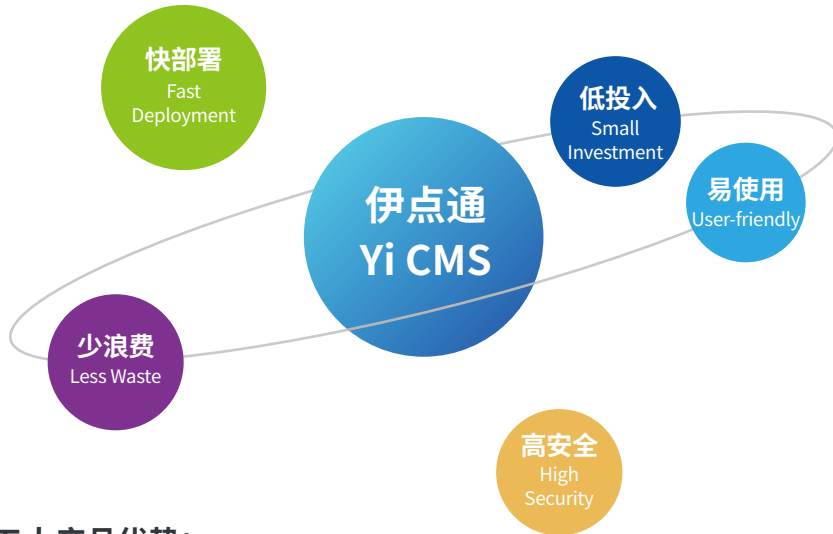


# 伊点通Yi CMS状态监控系统

## Yi CMS(Condition Monitor System)

伊点通 Yi CMS(Condition Monitor System), 是依托于Yi+ 智造平台, 应用物联网、云计算、大数据、人工智能等新一代ICT技术, 面向塑料注射成型行业的生产监控系统。

Based on Yi+ intelligent manufacturing platform, Yi CMS(Condition Monitor System), a production monitoring system for injection molding industry, applies the new generation ICT technologies such as the IOT, Cloud Computing, Big Data and AI.



### 五大产品优势:

#### Advantages:

- 无需部署, 开户即用, 让企业快速实现智能数字化生产。
- 无需专职IT人员投入, 无需网络建设, 无需机房建设。
- 可无缝升级到Yi MES系统, 减少重复投资。
- Arrangement is not needed. It is available after establishing an account, helping enterprises realize intelligent digitization production quickly.
- IT professionals investment, network construction, IT room construction are not needed.
- Could upgrade to Yi MES system without gaps.
- 系统操作便捷, 简单易学, 快速上手。
- 金融级芯片数据加密, 网安二级等保认证, 保证客户数据安全。
- Convenient operation, easy learning, user-friendly.
- Data encryption with finance -level chip and certification of Network Security Level Protection 2.0 ensure customer data security.



### 客户价值“四个一”: Four Customer Values

- 一流效率: 设备状态实时监控, 异常停机及时推送, 降低停机损失。
- 一流品质: 工艺参数实时监控, 关键参数及时预警。
- 简单化一: 产量、效率、良率等生产报表一键生成, 简化管理。
- 一键掌控: 随时随地掌控车间生产状况。

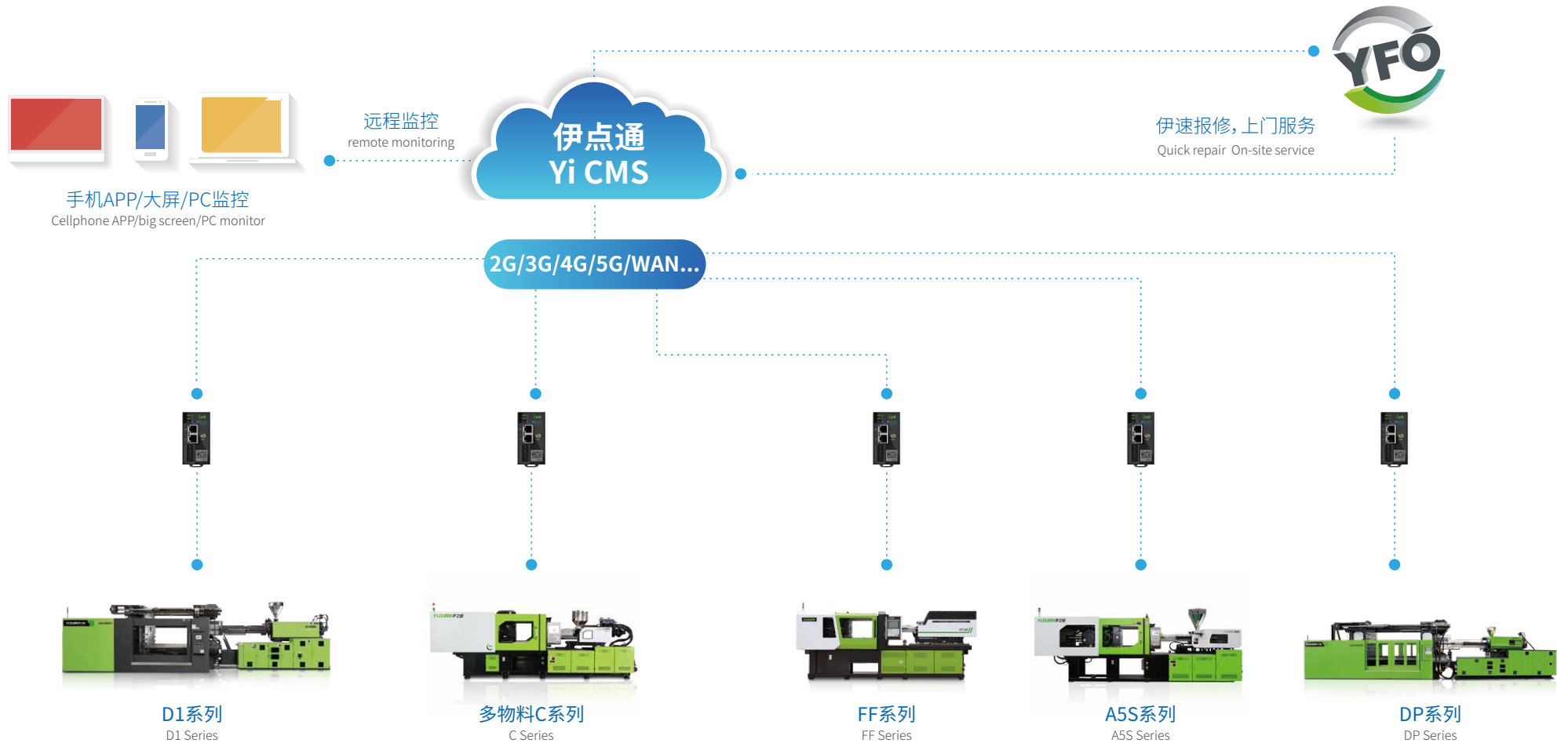
- Excellent Efficiency: Real-time monitoring on equipment status, prompt inform when abnormal shutdown to reduce lost.
- Outstanding Quality: Process parameters real-time monitoring, timely warning of key parameters.
- Easy Management: One-key generate of production reports about yield, production, efficiency and so on.
- One-key Control: Production status control in workshop at anywhere anytime.

# 硬件架构

## Hardware Architecture

基于物联网、云计算技术的微服务架构, 客户现场免部署, 即插即用、按需租用, 系统功能同步升级

Based on the micro-service structure of the Internet of Things and cloud computing technology, customer site is free of deployment, plug and play, on-demand optional functions, system function synchronization upgrade

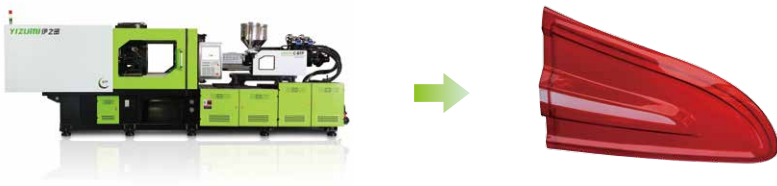


# 伊点通Yi CMS状态监控系统

## Condition Monitor System

生产监控 —— 生产状态一目了然

Production monitoring - production status at a glance



### 设备监控 Equipment monitoring

- 运行状态实时可视
- 报警信息实时采集
- 运营指标动态计算
- 异常停机及时预警
- Real-time visibility of operating status
- Dynamic calculation of operational indicators
- Real-time collection of alarm information
- Timely warning of downtime



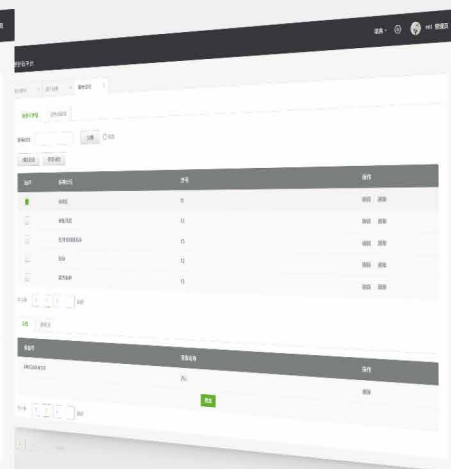
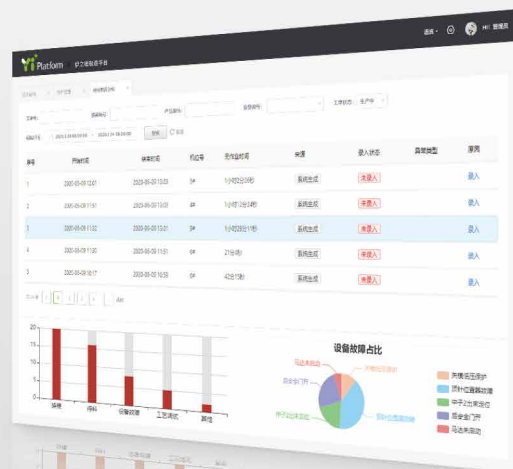
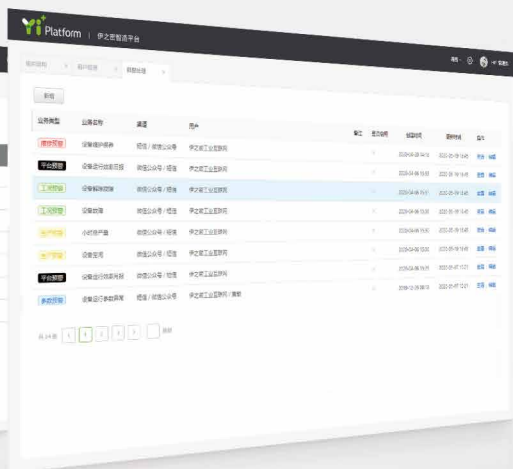
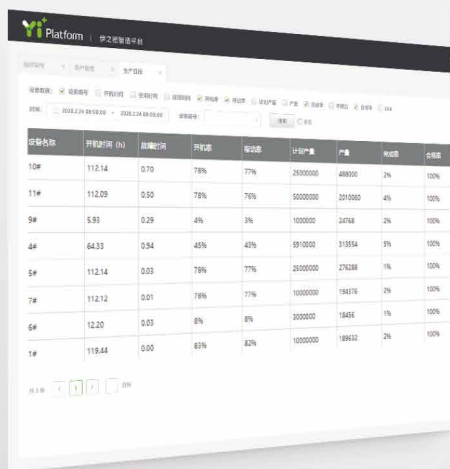
### 工艺监控 Process monitoring

- 工艺参数实时采集
- 历史加工参数追溯
- 参数异常及时预警
- 工艺参数SPC控制
- Process parameter real-time acquisition
- Abnormal parameter warning
- Historical processing parameters
- Process parameter Statistical Process Control



### 生产统计 Production statistics

- 生产进度监控
- 小时产量统计
- 质量统计分析
- KPI异常预警
- Production schedule monitoring
- Quality report analysis.
- Hourly output statistics
- KPI warning



## 分析报表 Report Analysis

- 提供数据实时汇总, 直观清晰
- Provide real-time data collection, intuitive and clear.

## 预警管理 Warning management

- 自定义各种预警规则, 通过短信或微信公众号通知给管理者
- Customized various warning rules remind managers through short messages, Wechat Official Accounts

## 故障管理 Fault Management

- 自动记录设备停机时长, 分析停机原因
- E-service 24 一键报修, 过程可视, 服务评价
- Automatically record downtime, analyze cause
- Report repairs in one-click on E-service 24, visible process, service evaluation

## 设备维保 Equipment maintenance

- 维保计划自动生成
- 维保工单及时推送
- 维保执行事先预警
- Maintenance plans are automatically generated
- Warning before maintenance execution
- Maintenance work orders are pushed timely





## 移动终端——车间生产随处可视

Mobile terminal - workshop production can be seen anywhere



支持无缝升级Yi MES  
Support upgrade of Yi MES

